

Instalação do sc-SUS através do Shell - Ubuntu 22.04 LTS

Instalação incluir todos as configurações e extensões necessária para o funcionamento

Necessário:

- Baixar o Shell no link https://raw.githubusercontent.com/manoellouren/sc-SUS/main/instalar_scsus-apache.sh
- Acesso root no terminal

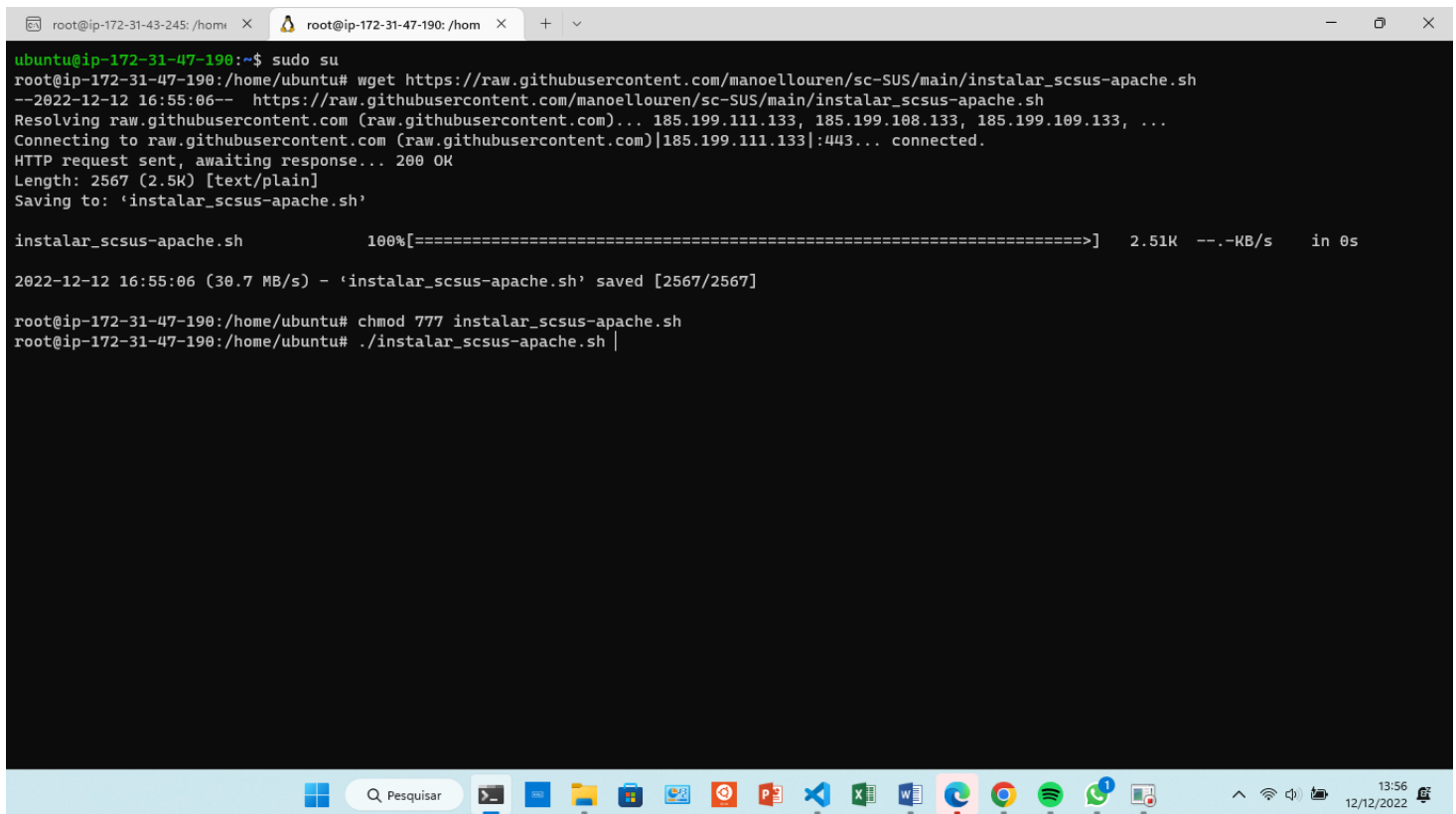
Comando que devem ser executados no terminal

sudo su (digitar senha do administrador)

wget https://raw.githubusercontent.com/manoellouren/sc-SUS/main/instalar_scsus-apache.sh

chmod 777 instalar_scsus-apache.sh

./instalar_scsus-apache.sh



```
root@ip-172-31-43-245: /home X root@ip-172-31-47-190: /home X + v
ubuntu@ip-172-31-47-190:~$ sudo su
root@ip-172-31-47-190:/home/ubuntu# wget https://raw.githubusercontent.com/manoellouren/sc-SUS/main/instalar_scsus-apache.sh
--2022-12-12 16:55:06-- https://raw.githubusercontent.com/manoellouren/sc-SUS/main/instalar_scsus-apache.sh
Resolving raw.githubusercontent.com (raw.githubusercontent.com)... 185.199.111.133, 185.199.108.133, 185.199.109.133, ...
Connecting to raw.githubusercontent.com (raw.githubusercontent.com)|185.199.111.133|:443... connected.
HTTP request sent, awaiting response... 200 OK
Length: 2567 (2.5K) [text/plain]
Saving to: 'instalar_scsus-apache.sh'

instalar_scsus-apache.sh      100%[=====] 2.51K --.-KB/s in 0s

2022-12-12 16:55:06 (30.7 MB/s) - 'instalar_scsus-apache.sh' saved [2567/2567]

root@ip-172-31-47-190:/home/ubuntu# chmod 777 instalar_scsus-apache.sh
root@ip-172-31-47-190:/home/ubuntu# ./instalar_scsus-apache.sh |
```

Feito isso o próximo passo é configurar o banco de dados: Todas as opções serão preenchidas com “y” sim.

*Enter current password for root (enter for none): **tecle Enter***

*Switch to unix_socket authentication [Y/n]: **Digite Y (sim)***

*Change the root password? [Y/n] : **Digite Y (sim)***

*New password: **Crie senha para o banco de dados***

*Re-enter new password: **Repita a senha***

Instalação do sc-SUS através do Shell - Ubuntu 22.04 LTS

Instalação incluir todos as configurações e extensões necessária para o funcionamento

*Remove anonymous users? [Y/n]: **Digite Y (sim)***

*Disallow root login remotely? [Y/n] : **Digite Y (sim)***

*Remove test database and access to it? [Y/n] : **Digite Y (sim)***

*Reload privilege tables now? [Y/n] : **Digite Y (sim)***

```
Re-enter new password:
Password updated successfully!
Reloading privilege tables..
... Success!

By default, a MariaDB installation has an anonymous user, allowing anyone
to log into MariaDB without having to have a user account created for
them. This is intended only for testing, and to make the installation
go a bit smoother. You should remove them before moving into a
production environment.

Remove anonymous users? [Y/n] y
... Success!

Normally, root should only be allowed to connect from 'localhost'. This
ensures that someone cannot guess at the root password from the network.

Disallow root login remotely? [Y/n] y
... Success!

By default, MariaDB comes with a database named 'test' that anyone can
access. This is also intended only for testing, and should be removed
before moving into a production environment.

Remove test database and access to it? [Y/n] y
- Dropping test database...
... Success!
- Removing privileges on test database...
... Success!

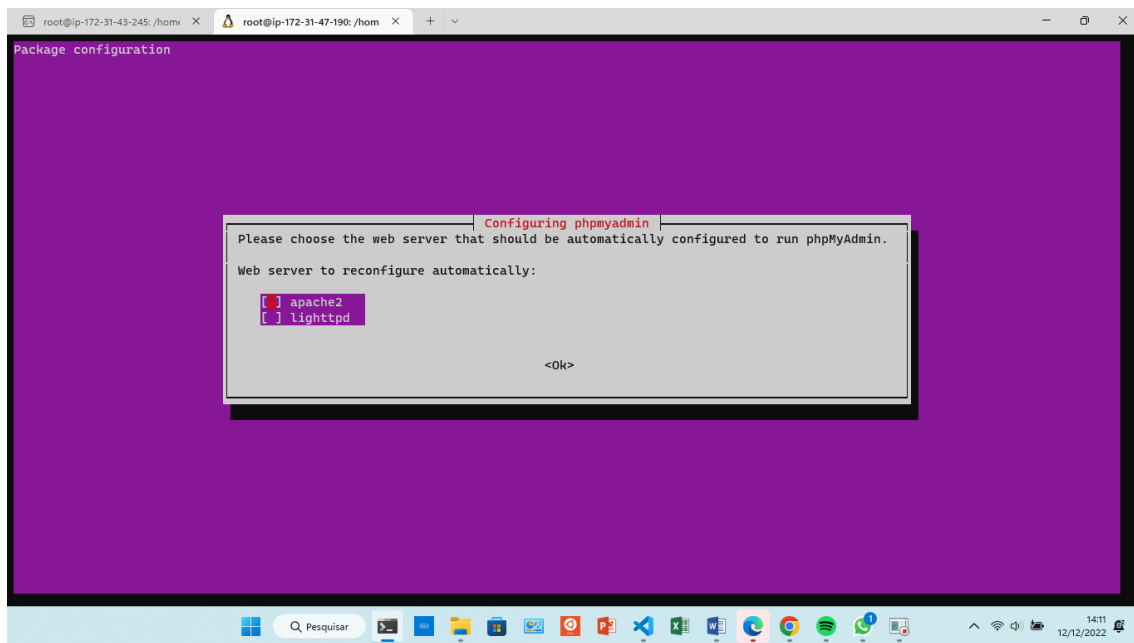
Reloading the privilege tables will ensure that all changes made so far
will take effect immediately.

Reload privilege tables now? [Y/n] y|
```

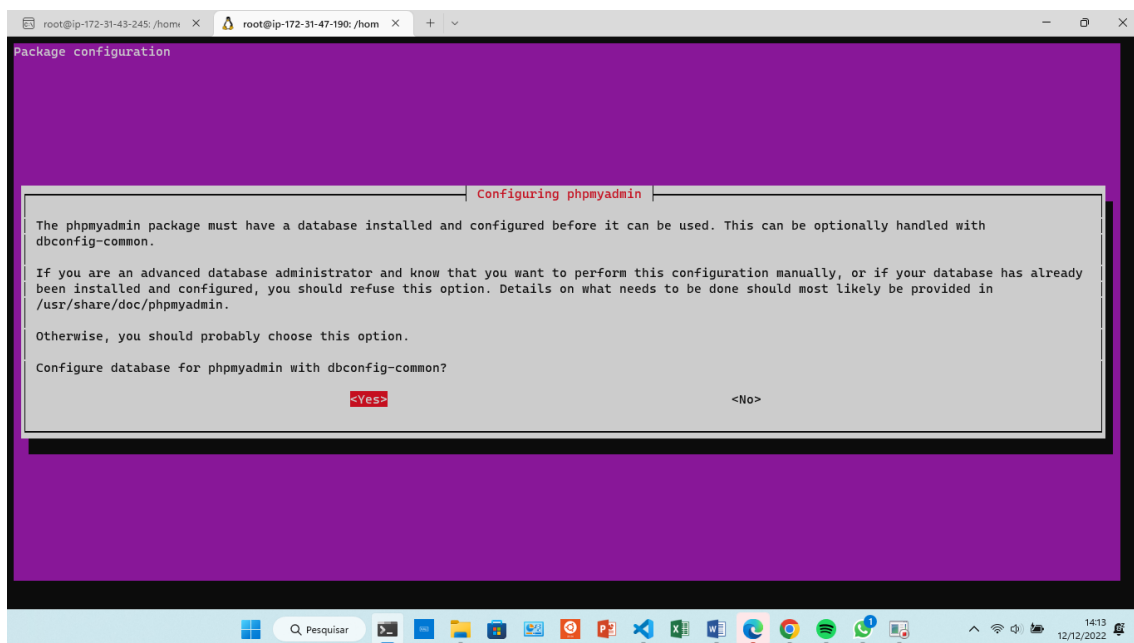
Feito isso, o script vai solicitar a senha criada anteriormente para configuração do phpmyadmin:

Instalação do sc-SUS através do Shell - Ubuntu 22.04 LTS

Instalação incluir todos as configurações e extensões necessária para o funcionamento



Reinicie o apache marcado a opção e clicando em ok

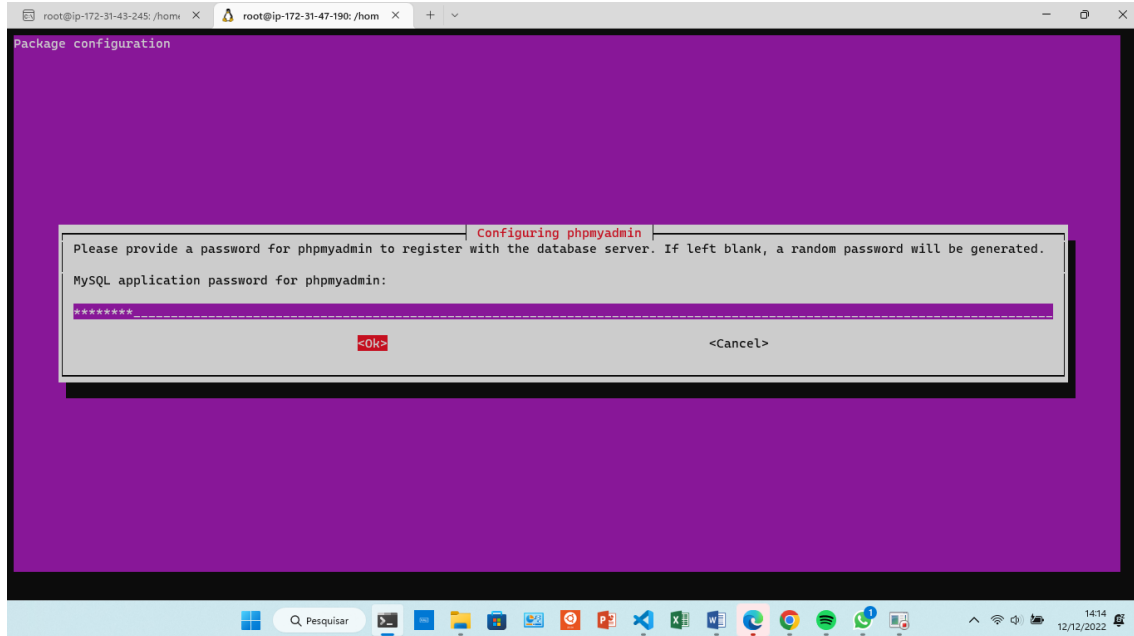


Clica em yes, para começa a configuração do phpmyadmin:

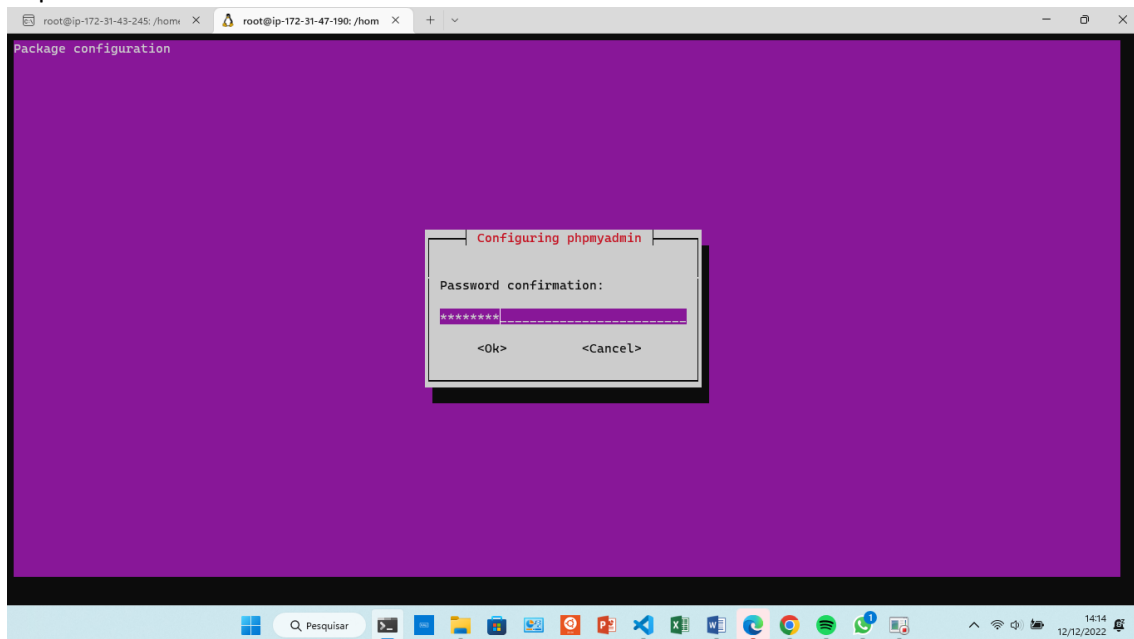
Adicione a senha criada anteriormente

Instalação do sc-SUS através do Shell - Ubuntu 22.04 LTS

Instalação incluir todos as configurações e extensões necessária para o funcionamento



Repita a senha



Instalação do sc-SUS através do Shell - Ubuntu 22.04 LTS

Instalação incluir todos as configurações e extensões necessária para o funcionamento

Terminando a instalação e só configurar o sc-SUS com sua key

